



Luminant



Luminant Power - Future Expansion CPNPP 3 & 4

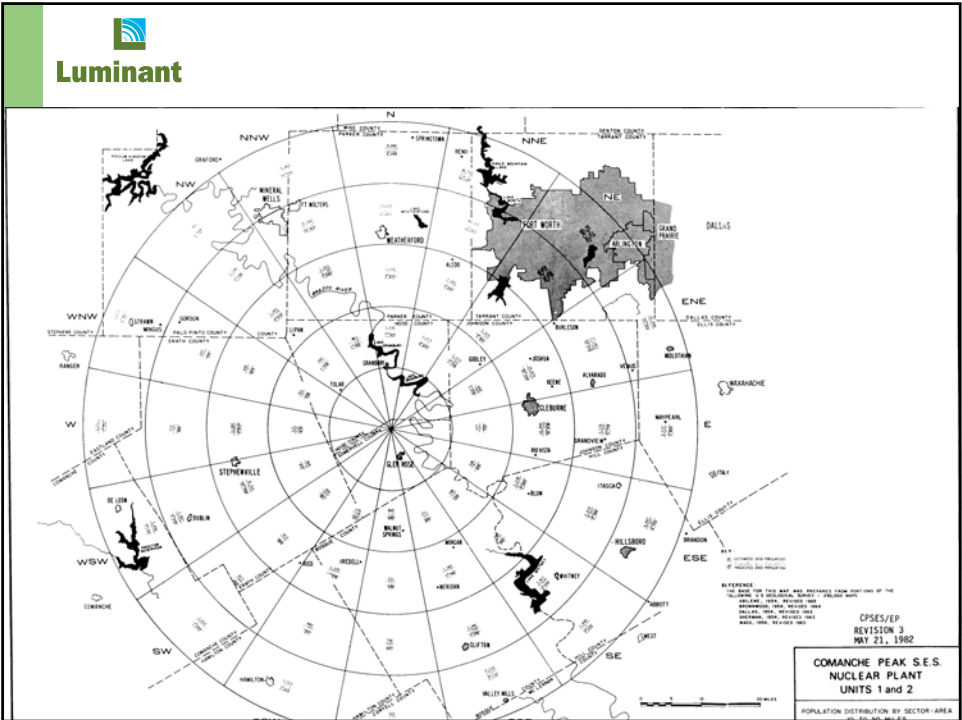
October 24, 2007



Luminant

EXISTING FACILITY

- **Located in Somervell County near Glen Rose**
- **Two 1150 mw Nuclear Generating Units**
- **Cooling Water Supplied from Squaw Creek Reservoir (SCR)**
- **SCR Designed for Two Unit Operation**
- **SCR Supplemented by Water Contracted with BRA From Lake Granbury (48,300 ac.ft./yr)**
- **SCR Spillway Return Flows to Brazos River Basin Averages ~33,000 ac. ft./yr. (Varies Depending on Environmental Conditions)**

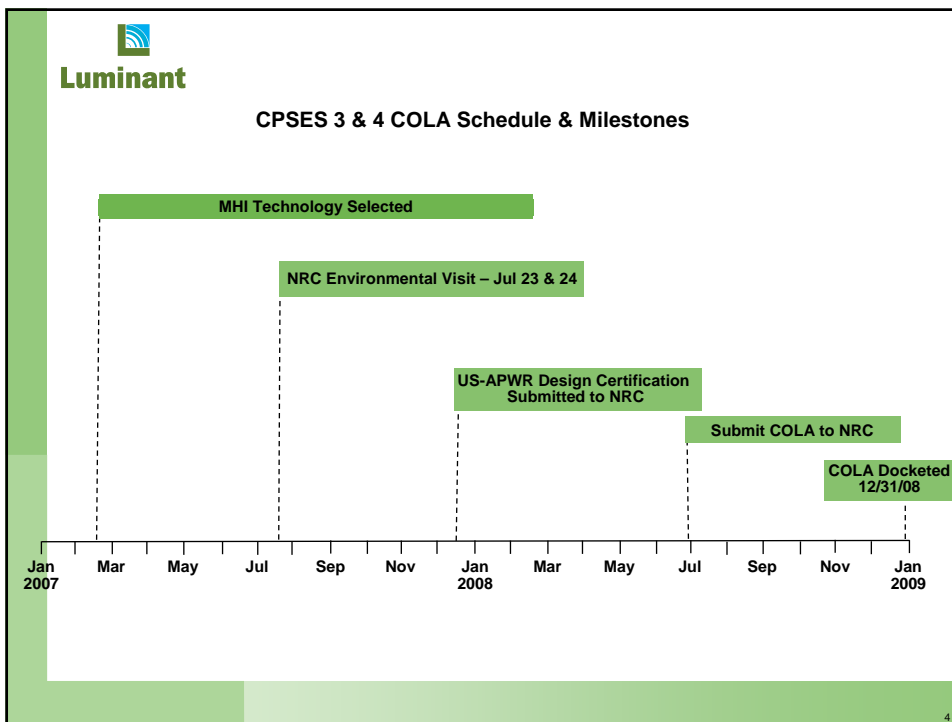


Luminant

PROPOSED PROJECT

- Two Additional Nuclear Units, 1700mw Each
- Advanced Pressurized Water Reactors (MHI US-APWR)
- Mechanical Draft Cooling Towers

3





Luminant

NEW WATER SUPPLY

- **Make-up to Cooling Towers From Lake Granbury**
- **Purchase an Additional ~80,000 ac. ft./yr.**
- **Return Flow of ~49,000 ac. ft./yr. From Cooling Towers to Lake Granbury**
- **Note: Values Are Estimates, Actual Numbers Will be Identified during the Water Plan Amendment process**

6



Luminant

REQUESTED APPROVALS

- **Region G direct HDR to prepare the materials necessary to amend the 2006 Region G Water Plan to reallocate water to support the operation of two additional nuclear generating units at the Comanche Peak Nuclear Power Plant.**
- **Region G direct BRA to enter into a contract with Luminant Power to fund the preparation of the proposed amendment materials and all other amendment cost**
- **Region G direct BRA to schedule a public hearing to be held at the next Region G meeting for the planning group to review the proposed amendment materials and receive public comment**

7



Luminant

